



2pts

1. Match each word on the left to a drawing on the right.

shortest 

longest 

2 pts = both correct

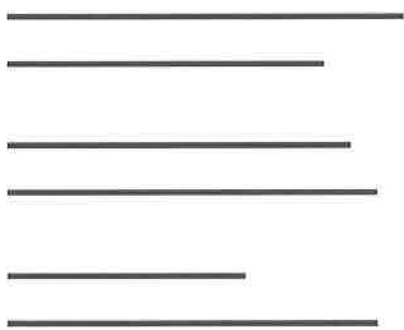
1 pt = 1 correct with no incorrect choice

0 pts = 0 correct or one correct & one incorrect

2. Is the first line shorter than the second line?

Choose Yes or No.

3pts



Yes

No

1pt

Yes

No

1pt

Yes

No

1pt

3. The ribbon is about 3 tiles long. Draw tiles below the ribbon to show its length.

1pt



correct drawing



4. Use the  below. About how long is the marker?

1 pt

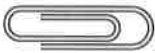


about 4 

5. Measure the . Use .

5 pts




about 3  1 pt



about 2  1 pt



about 4  1 pt

The gray  is the shortest. 1 pt

The black  is the longest. 1 pt



6. Look at the hour hand. What is the time?

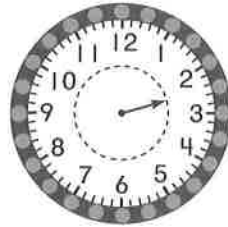
1 pt



- 2:00
- 3 o'clock
- 4 o'clock
- 5:00

7. What time is it? Circle the time that makes the sentence true.

1 pt



The time is

2:30
3:00
3:30

8. Choose all the ways that name the time on the clock.

2 pts



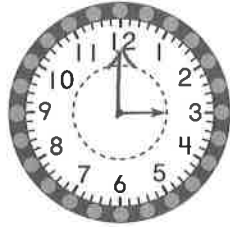
2 pts = both correct ONLY  
 1 pt = 1 correct with NO incorrect choice  
 0 pts = any incorrect choice

- 8:30
- 6:30
- half past 6:00
- half past 8:00



9. Draw a hand on the clock to show 3:00.

1pt



10. Dan tried to show 4:00.  
He made a mistake.

2pts



Draw hands on the clock to show 4:00.

1pt



1pt

What did Dan do wrong? Explain Dan's mistake.

for correct explanation

11. The  is longer than the .

1pt

The  is longer than the .

Draw the length of the .

